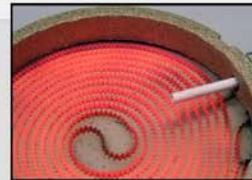


# Oven and Hob Platinum Sensor Probe



**350C° Oven Probe**  
D5-D6 Not sealed AISI 316  
Inox Pipe available with  
length up to 120mm  
Custom wire assembly  
280C° Fiber-Glass reinforced



**800C° Hob Probe**  
Fully integrated Ceramic  
Sensor Pt1000 Tk 3850  
Precision Class 2B  
10.000 Hrs Tested  
Pure Platinum/Crome Wire  
Inter-Connection



**550C° Oven Probe**  
D6 sealed AISI 316 inox pipe  
Plasma Welded available with  
length up to 120mm  
Custom wire assembly

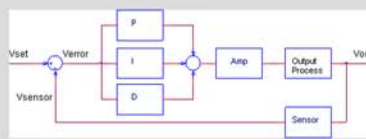
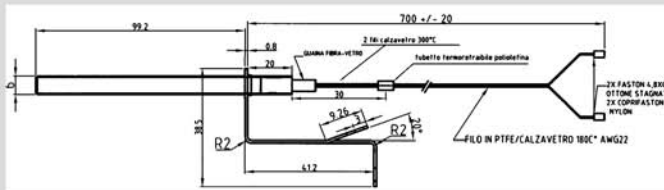
## Oven Ptrd Sensor

The heart of this probe is Ptrd - Platinum Temperature Resistance Detector - based on Thin-Film technology.  
Precise, fast, long-term stability and low-cost allows the replacement of Mechanical Thermostat with Electronic Controller P.I.D. -Proportional-Integral-Derivative.  
Pt100-500-1000 are available with Tk 3850 and 3750 on request.

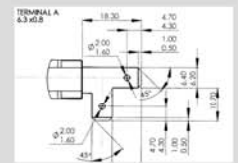
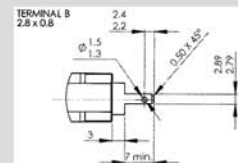
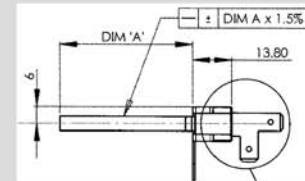
## Hob Ptrd Integrated Sensor

The State of Art in Hob heating Control - Dedicated Ptrd assembled in 96% Alumina Tube and Steatite ceramic support - Very fast rise time can support water boiling point detection.

## Oven Ptrd Sensor



## Hob Ptrd Integrated Sensor



## Features:

- Fully Inox AISI 316 Pipe
- Up To 2500V Dielectric Strength
- 280C° Fiber-Glass extension wire
- Plasma welded Terminal Tube
- Custom Inox AISI 304 Flange
- -50C + 550C° Working temperature
- Ø 6 - Ø 5 Tube available
- Class B and C precision available

## Features:

- Fully Ceramic Construction
- Extremely Fast Response
- Special Pt1000 800C° Inside
- -50C° up to 750C° Working Temp.
- Laser Nano-Junction to wire extension
- High Precision Set Point
- 10.000 HRS Tested
- Pure Platinum/Cr Extention Wire

## Ptrd Standard

$R_0 = 0,1K$  class B  $Tk_{0-100°C} = 3850$   
 $R_0 = 0,5K$  class B  $Tk_{0-100°C} = 3850$   
 $R_0 = 1K$  class B  $Tk_{0-100°C} = 3850$

Tk 3750 VALUES AVAILABLE ON REQUEST  
PRECISION CLASS C AVAILABLE ON REQUEST

SPECIAL GLASS NTC Tmax 300C° ON REQUEST

## Electrical:

- 3750V Dielectric Strength
- 2B Precision Class
- Pt 1000 Tk 3850
- 10.000 Cycles Tested
- 1mA Drive Current
- Rise Time < 3" from 25C° to 750C°