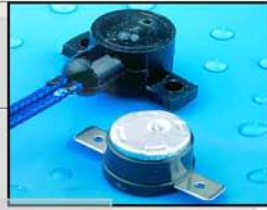


Fridge and Freezer Sensor Probes



IP67 NTC Sensors
-40C° up to 105C°
High Precision



IP67 Thermostat
-40C° up to 90C°
+/- 3C° Tolerance



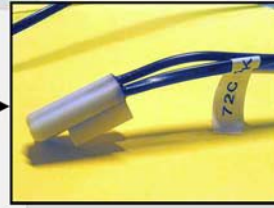
IP67 Defrosting and Safety System
10A 250V
ENEC APPROVED



Simple



Double



Double with NTC sensor

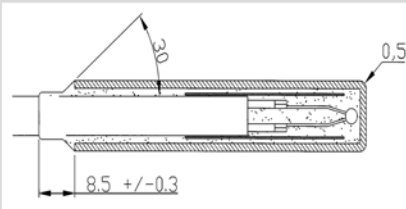


Integrated Defrosting System
Connected directly To Heating Element
10A 250V ENEC APPROVED

IP67 Safety system for Heating Aluminium Element according to
EN60335 Rules - GWIT 750C° No Flame -

Control H.T.P. s.r.l. produce many type of Probes for Fridge and Freezer in Industrial and Householding Appliances. NTC are used to detect temperature from -40C° up to 105C°. These types of sensors are interfaced to Electronic Control Board. NTC (Negative Temperature Coefficient) sensors convert temperature value in electrical signal with precision up to 0,3 C°. C.H.T.P. has developed a lot of Electromechanical Probes for FrostFree refrigerators. Sensors keep under control defrosting cycle and limit high temperature on the evaporator. To avoid failure of Heating Element, and in accordance with Standard European Rules, C.H.T.P. make Thermal Cut Off (IP67 TCO) in different shapes and fixing method. Particular attention in Engineering process is given to the co-design approach with Customer to obtain mutual advantages and cheaper products.

NTC Probe



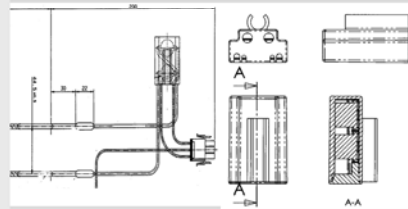
Features:

- IP 67 5000 Hrs tested in Water
- Round 9mm, Square 10x12mm housing shape.
- Different wire length available
- Harmonized cables oval-round
- Resin injection special process
- Wide range of NTC value and connectors
- High Resilience at Low Temperature

Electrical:

- 3750V X2 Class
- 15 seconds Thermal Time Const.
- $R_{25} = 2K7-5K-10K \pm 1\%$ available
- $B_{25-85} = 3977-3435 \pm 1\%$ R/T value
- 25 mW max dissipation NTC
- Working Temp. -40C° +105C°

Defrosting System



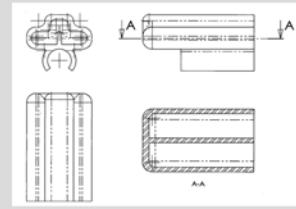
Features:

- IP 67 5000 Hrs Tested in Water
- Easy Clip for Ø 8mm Tube
- No Sealed Plug needed from Heating Element and Thermostat
- Two different temperature detected in the same housing
- Polyurethane Resin sealing
- GWIT 750C° No Flame Tested
- ENEC and ATEX approved

Electrical:

- 3750V X2 Class
- 10A 250V Max Power
- Silver Double Contact Clixon™
- 10C° Min. Temp. Differential
- ±3C° Max Set Point Deviation
- Working Temp. -40C° +90C°

TCO Thermal-Cut-Off



Features:

- IP 67 5000 Hrs Tested in Water
- Easy Clip for Ø 8mm Tube
- Simple-Double-Triple Type Construction
- TCO + NTC Assembling
- GWIT 750C° No Flame Tested
- Three separate PVC Cables double insulation
- High Volume Capability

Electrical:

- 3750V X2 Class
- 10AG4 16AG5 250V TCO
- $R_{25} = 2K7-5K-10K \pm 1\%$ available
- $B_{25-85} = 3977-3435 \pm 1\%$ R/T value
- 25 mW max dissipation NTC
- Working Temp. -40C° +90C°